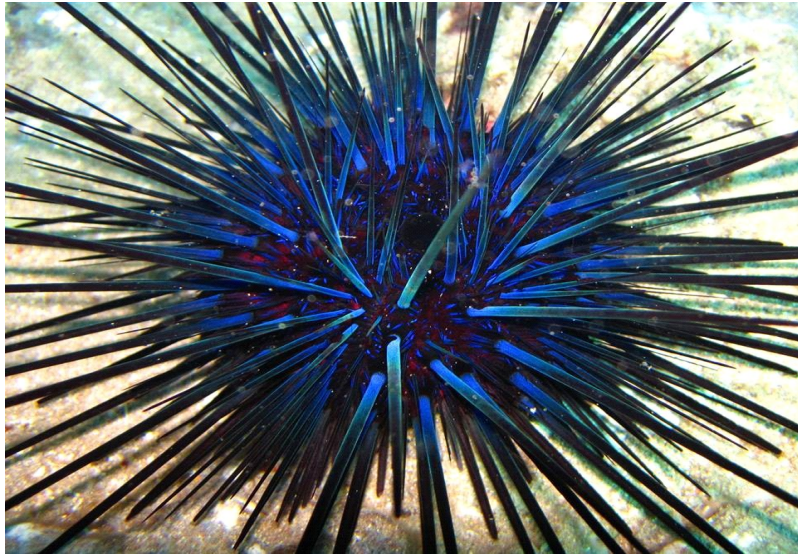




SCUBA LUV MAUI DIVE REPORT “CRITTER OF THE WEEK”

BLUE-BLACK URCHIN—” wana”



The primary black spines of this urchin have a beautiful blue satiny sheen. The distended anal sac is small, black and hardly visible. They occur in depths of down to 70’ but are most common at depths below 15’ along turbulent rocky shores. Their spines break off easily and bury into the skin quite quickly. This species grows to 6” including the spines. BEWARE...the spines are super sharp and painful!

DATE OF REPORT: JAN. 5, 2015
DEPTH: 12’ TEMP.: 77 DEGREES
PHOTO BY: STEVE MADARAS

(808) 870-2738

FOR A COMPLETE LIST OF REPORTS, GO TO:
www.scubaluvmaui.com

