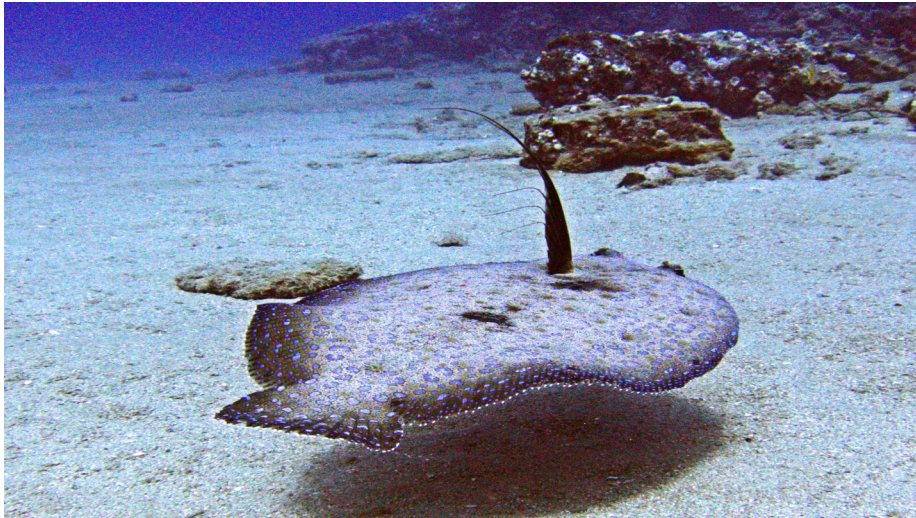




SCUBA LUV MAUI DIVE REPORT “CRITTER OF THE WEEK”

FLOWERY FLOUNDER SOUTH MAUI



In Hawaiian “pak i”, this large, flatfish always lives on hard bottoms, traveling quickly across the sand, displaying a large sail-like fin. Flatfish begin life as normal fish with eyes on either side. As they mature, the eye actually migrates over the top of the head, eventually joining the other eye on the opposite side! They grow to about 19”...

DATE OF REPORT: APRIL 14, 2015
DEPTH: 65’ TEMP.: 77 DEGREES
PHOTO BY: STEVE MADARAS

(808) 870-2738

FOR A COMPLETE LIST OF REPORTS, GO TO:
www.scubaluvmaui.com

