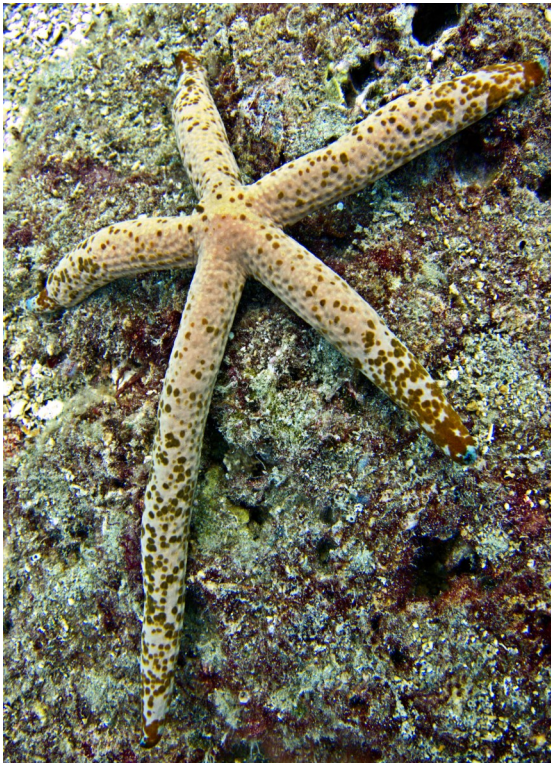




SCUBA LUV MAUI DIVE REPORT “CRITTER OF THE WEEK” SOUTHSIDE MAUI

“ LINCKIA SEA STAR“



The most commonly seen star in Hawaii, this species is almost always found on hard substrate where it feeds on algae. To reproduce these stars can shed an arm, which then regenerates a complete new animal. Stars in the process of regenerating (with one long arm and four short ones) are called “comets”. This sea star grows to about 4 1/2” and is usually found in very shallow water.

DATE OF REPORT: AUGUST 18, 2015
DEPTH: 12' WATER TEMP.: 84 DEGREES
PHOTO BY: STEVE MADARAS

(808) 870-2738

FOR A COMPLETE LIST OF REPORTS, SEE:
www.scubaluvmaui.com

