



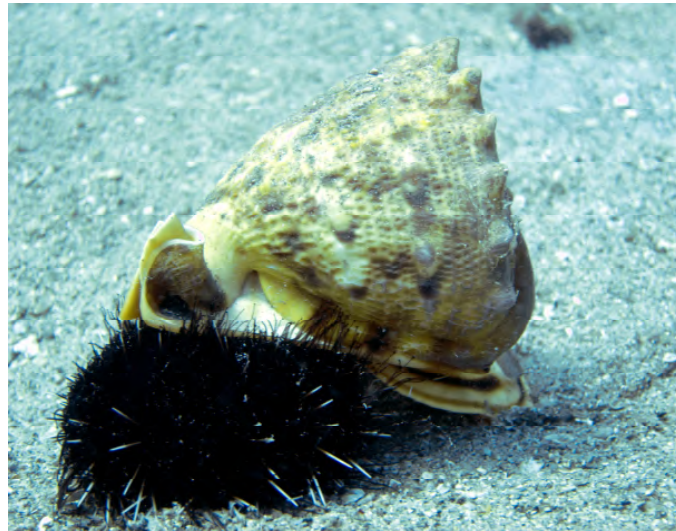
# SCUBA LUV MAUI DIVE REPORT

## KEAWAKAPU BEACH

### “CRITTER OF THE WEEK”

### (808) 870-2738

## HORNED HELMET AND PURPLE URCHIN



**We never know what we are going to come across on the outside reef...here we have a young Hawaiian Horned Helmet pursuing a pretty big purple sea urchin...“Helmets” are sand dwellers, found in depths of 10-200’, and can grow up to 11”. The shells are heavily calcified, with teeth just inside the lip and along the outer edges. The males have taller horns than the females. They locate their prey chemically and feed on urchins and sand dollars. After the prey is located and secured, they begin to feed by removing the spines from an area and boring a hole through which they extract the animal. We have observed that after a meal like this, they tend to stay in the immediate area for several days digesting their food. This makes great video but it does take some time to film it**

**DATE OF REPORT: NOV. 11, 2012**  
**WATER TEMP. 79 VIZ: 80’**  
**PHOTO: STEVE MADARAS**

**FOR COMPLETE SERIES SEE :  
[www.scubaluvmaui.com](http://www.scubaluvmaui.com)**



