



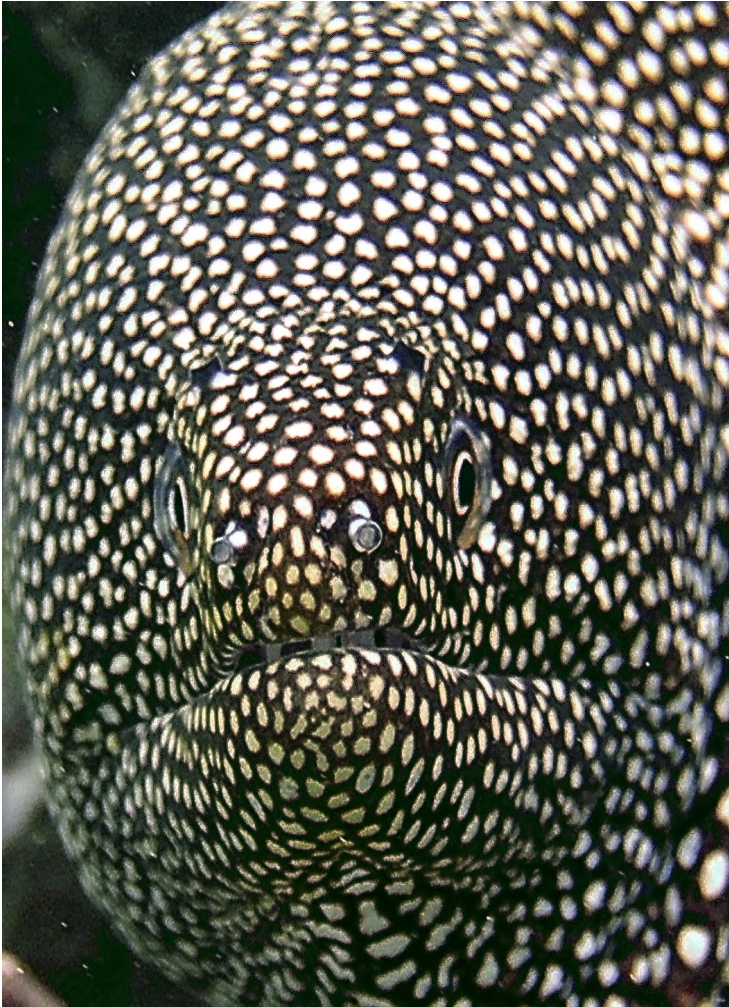
SCUBA LUV MAUI DIVE REPORT

KEAWAKAPU BEACH

“CRITTER OF THE WEEK”

(808) 870-2738

WHITEMOUTH MORAY EEL “puhi oni o “



This eel often holds it's mouth wide open, perhaps in a threat display or to attract prey. It feeds on fish and crustaceans—often foraging in the day, usually early in the morning , poking it's snout into crevices and disappearing in the reef and re-appearing somewhere else seconds later.

Other predators may accompany it, hoping to get a free meal from the left-overs. When the eel enters a cavity in the coral, other fish sometimes block the exit to catch any escaping prey. Grows to 4' and tail is always tipped in white.

DATE OF REPORT: JANUARY 20, 2013

WATER TEMP. 76 VIZ: 40'+

PHOTO BY: STEVE MADARAS

**FOR COMPLETE SERIES SEE :
www.scubaluvmaui.com**

