



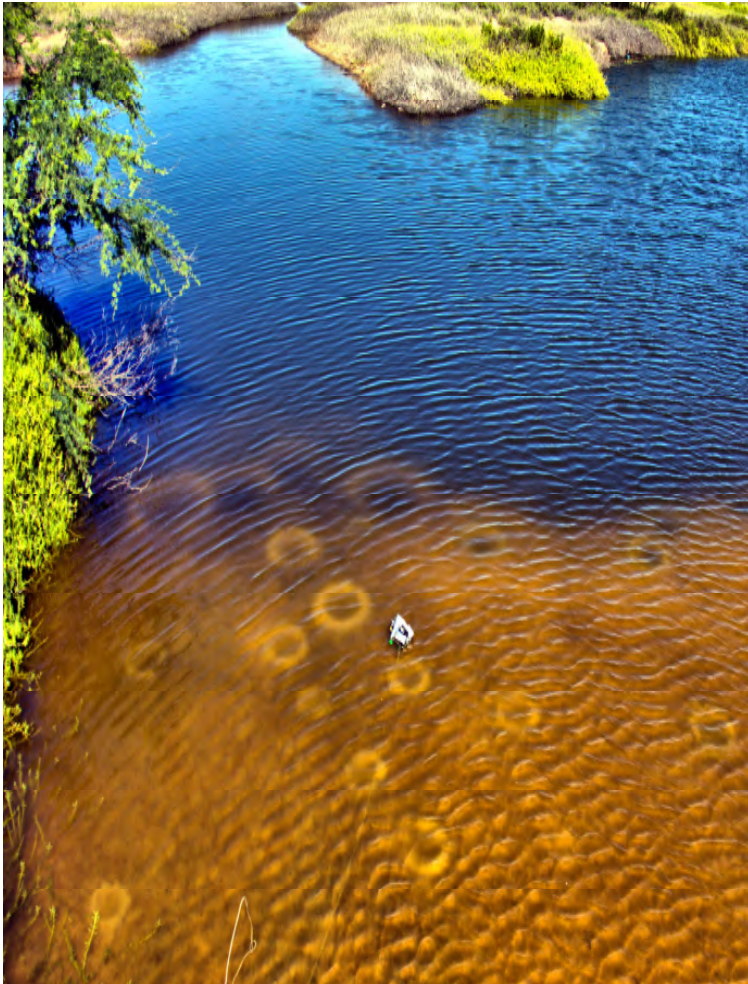
# SCUBA LUV DIVE REPORT

## “CRITTER OF THE WEEK”

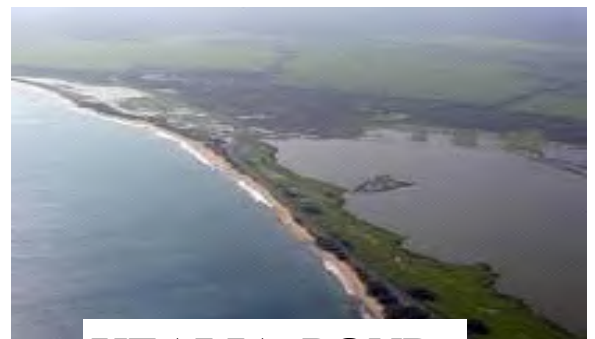


### TILAPIA

Males construct uniform holes to attract a mate. The female lays her eggs in the middle and leaves. The male fertilizes the eggs as the female waits. Then she picks up the eggs in her mouth and relocates them to a different part of the pond. Ten days later the young tilapia are born and the cycle continues! Tilapia are very popular to raise at home. They were introduced to the refuge and they are doing well!



**DATE OF REPORT: JANUARY 27, 2014**  
**WATER TEMPERATURE: 80 degrees**  
**LOCATION: KEALIA REFUGE**  
**PHOTO BY : STEVE MADARAS**  
**(808) 808-2738**  
**FOR COMPLETE SERIES SEE:**  
**[www.scubaluvmaui.com](http://www.scubaluvmaui.com)**



**KEALIA POND**

