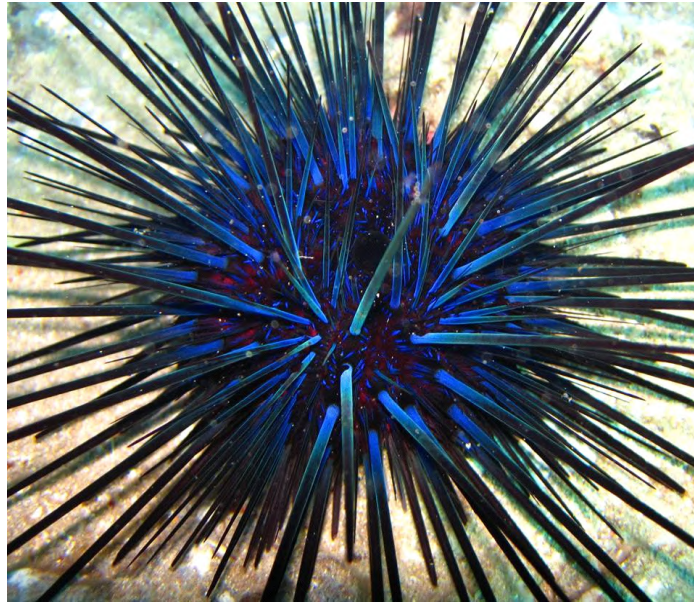




SCUBA LUV DIVE REPORT
“CRITTER OF THE WEEK”
(808) 870-2738
BLUE URCHIN (“WANA”)



Sooner or later every diver connects with the spines of an urchin. Some barely cause a problem and some require immediate medical care. The mouth of the urchin is a complex set of jaws and teeth controlled by 60 separate muscles. With these they scrape algae from the substrate, attack and eat other organisms and even bore into solid rock. Tiny urchin shrimp may live among the spines. These urchins occur to depths of 70’ but are most abundant at 15’ along turbulent rocky shores, growing to about 6” in diameter.

DATE OF REPORT: JUNE 21, 2014
WATER TEMP.: 80 DEPTH: 28’
PHOTO BY : MATT ONELLION

FOR COMPLETE SERIES SEE:
www.scubaluvmaui.com



