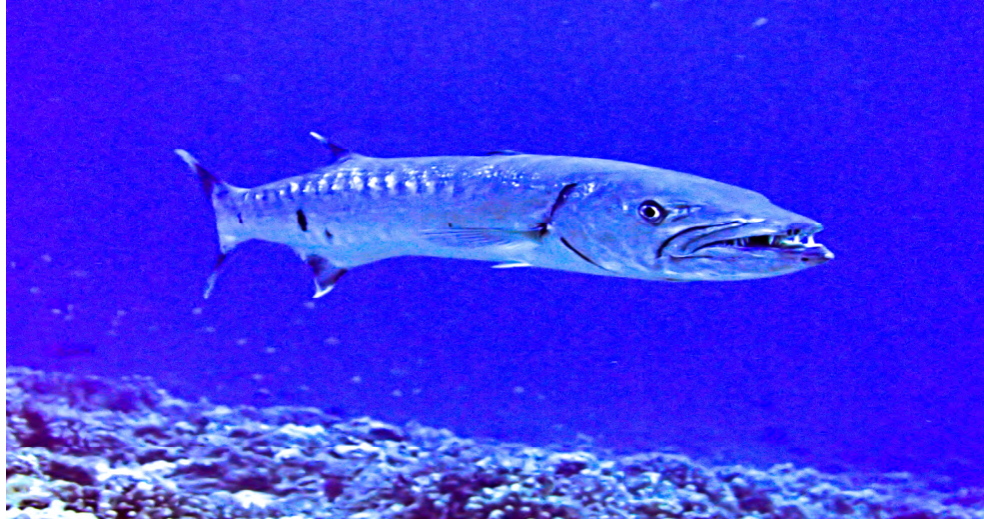




SCUBA LUV DIVE REPORT SOUTH MAUI

“CRITTER OF THE WEEK”

“ GREAT BARRACUDA “ (“kaku”)



The largest of the barracudas and the most frequently implicated in attacks on humans, this species is very silvery, often with black blotches on their underside and tail. These powerful predators occur alone or in very small groups and are often found cruising in shallow water...close to shore, especially in the early morning or late afternoon. They hang motionless over the reef, ready to strike as opportunity arises. Growing to about 6', they are considered “ciguatoxic” and “risky to eat”.

DATE OF REPORT: SEPT. 15, 2014

WATER TEMP.: 82 DEPTH: 65'

PHOTO BY : STEVE MADARAS

FOR COMPLETE SERIES SEE:

www.scubaluvmaui.com



