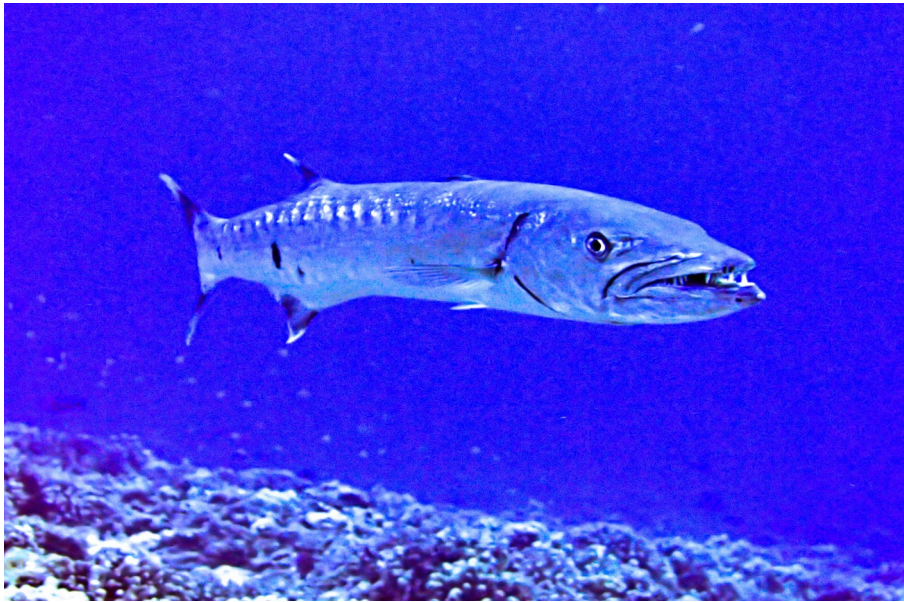




SCUBA LUV MAUI DIVE REPORT “CRITTER OF THE MONTH” SOUTHSIDE MAUI

“ GREAT BARRACUDA—kaku“



The largest of the barracudas and the one most implicated in attacks on humans, this species is silvery, often with black blotches on its lower side. The tail is mostly black with pale tips. These powerful predators occur alone or in small groups. They often cruise in shallow waters, close to shore, especially in early morning or late afternoon. They typically hang motionless over the reef, ready to strike when opportunity arises. It is risky to eat them as their meat can be toxic. They grow to 6' but in Hawaii they are usually only half that size. They are extremely efficient hunters and a real treat to see under water!

DATE OF REPORT: NOVEMBER 15, 2015
DEPTH: 55' WATER TEMP.: 82 DEGREES
PHOTO BY: STEVE MADARAS

(808) 870-2738

FOR A COMPLETE LIST OF REPORTS, SEE:
www.scubaluvmaui.com

