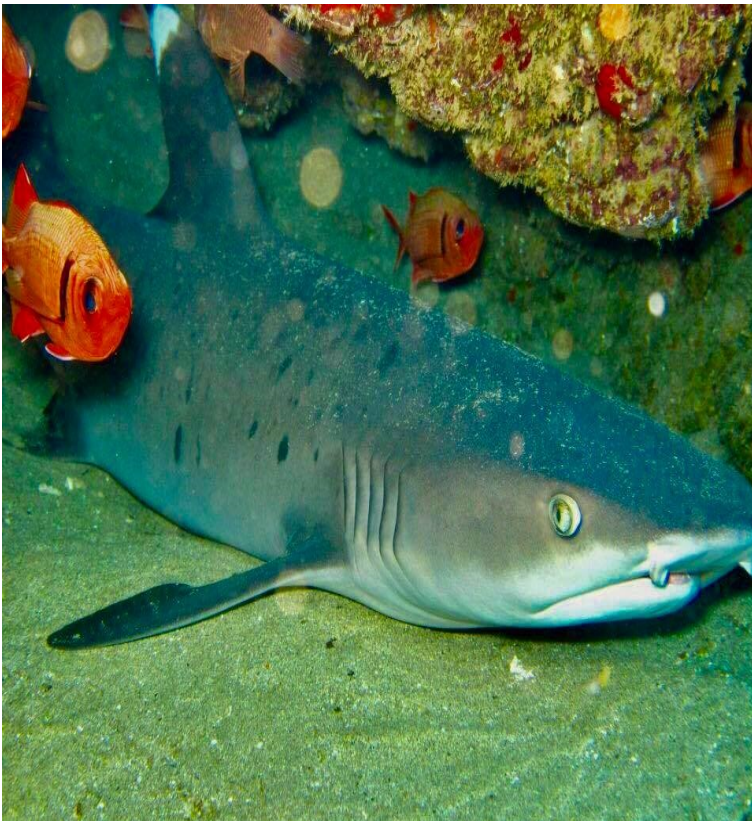




SCUBA LUV DIVE REPORT

WHITE TIP REEF SHARK “mano lala kea”

“CRITTER OF THE MONTH”



This species is the most common shark we see in Hawaii. They are often seen resting in the day in caves and under ledges, usually close to the substrate. Most large sharks need to swim constantly, making this behavior quite unique. Two well known sites to see them are Molokini and Makena Landing, where we saw this guy on our weekly night dive.

The Hawaiian name means “white fins”. Individuals are easy to identify from the dark spots on their sides as no two have the same exact pattern. Most feeding occurs at night when they dive, head first into the rocks, for their favorite food, the octopus. They grow to about 6’. Do not confuse the White Tip Reef Shark with it’s more aggressive cousin, the Oceanic White Tip. The White Tip Reef Shark is not considered aggressive...

DATE OF REPORT: JULY 31, 2017
DIVE SITE: MAKENA LANDING
WATER TEMP. : 78 DEPTH: 25’
PHOTO BY : STEVE HARMON

FOR COMPLETE SERIES SEE:
www.scubaluvmaui.com
(808) 870-2738

CHECK OUT OUR FIVE STAR
RATING, CERTIFICATE OF
EXCELLENCE AND CUSTOMER
REVIEWS AT : www.tripadvisor.com



