



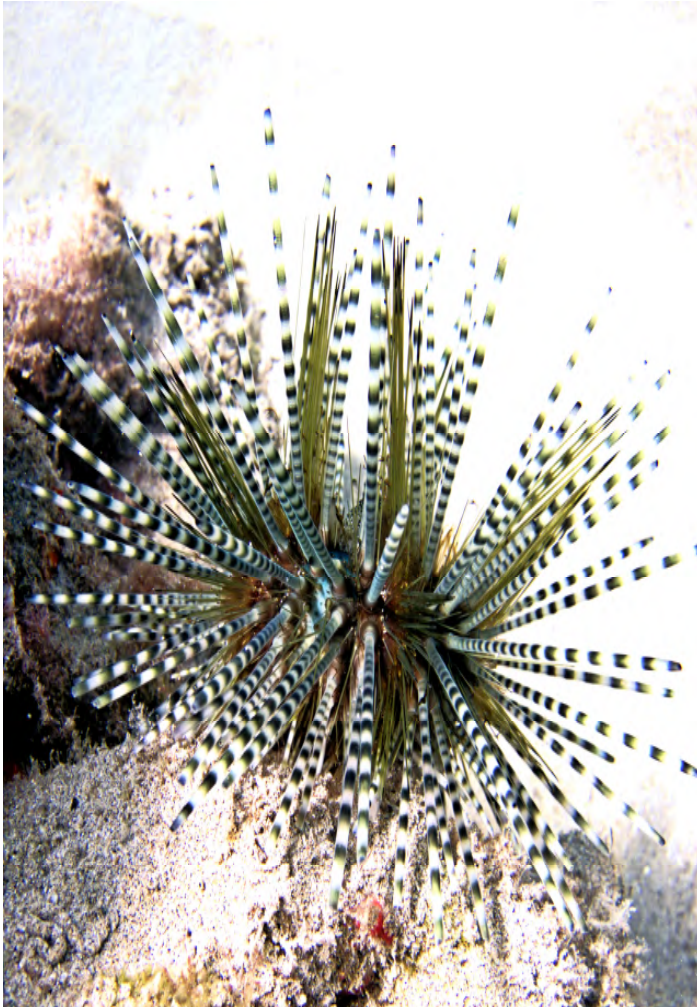
SCUBA LUV MAUI DIVE REPORT

KEAWAKAPU BEACH

“CRITTER OF THE WEEK”

(808) 870-2738

BANDED SEA URCHIN— “ wana “



This is the most common long-spined urchin in Hawaii. Most individuals have a resident parasitic crab on it's underside and a commensal shrimp that lives within the spines. Examine enough urchins (carefully) and you will find this pair on almost all adults. A sea urchins tube feet are tipped with suckers that help it cling, move about and remove unwanted debris. Tiny pincers on the ends of each spine help it remove unwanted material and sometimes serve as a second line of defense. The sting from the banded urchin

DATE OF REPORT: JANUARY 28, 2013

**WATER TEMP. 76 VIZ: 90'+
(OUTSIDE REEF)**

PHOTO BY: DIANA MADARAS

**FOR COMPLETE SERIES SEE :
www.scubaluvmaui.com**

